

# ExCam® IPM1145



Compact ATEX, IECEx & EAC-Ex Certified HDTV Day & Night Varifocal Lens Camera with RemoteZoom and RemoteFocus

## Features.

- ✓ ATEX, IECEx & EAC-Ex certification
- ✓ 1920x1080 (HDTV 1080p)
- ✓ Day & Night functionality
- ✓ Dynamic and modular PTC heating concept for arctic temperatures (-60°C)
- ✓ One-cable-wiring (PoE+) IEEE 802.3af/at
- ✓ P-Iris control
- ✓ Remote Focus and Remote Zoom
- ✓ Internal SD-card storage
- ✓ The optional hydraulic enclosure cooling system „cool.Jacket“ allows the use at high temperatures: „High Definition meets High Temperatures“



## Zones.

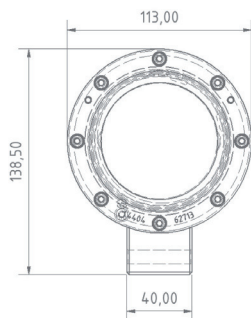
| Group I (Mining) | ATEX / IECEx / EAC-Ex |    |
|------------------|-----------------------|----|
| Category         | Ma                    | Mb |
| For use in       | ✗                     | ✓  |

| Group II (Gas & Dust) | ATEX / IECEx / EAC-Ex |   |   |    |    |
|-----------------------|-----------------------|---|---|----|----|
| Zone                  | 0                     | 1 | 2 | 21 | 22 |
| For use in            | ✗                     | ✓ | ✓ | ✓  | ✓  |

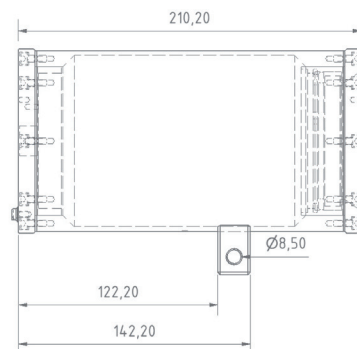
Further certifications upon request.

## Dimensions.

T08-VA2.1 .XX Front view

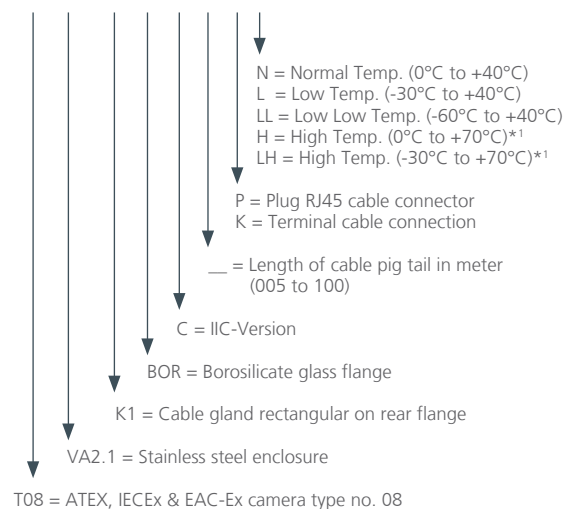


Left side view



## Models.

T08-VA2.1.K1.BOR-C-XXX-X-X



# Datasheet.

# ExCam® IPM1145



## Explosion protection

Declaration of conformity:

DIN EN 60079-0:2012, DIN EN 60079-1:2007  
DIN EN 60079-31:2009  
TR CU 012/2011, GOST R IEC 60079-0-2011,  
GOST IEC 60079-1-2011, GOST R IEC 60079-31-2010



Marking acc. to ATEX directive 2014/34/EU:  
Explosion protection (gas):  
Explosion protection (dust):  
Explosion protection (mining):

TUEV-14-ATEX-7539X  
II 2G Ex d IIC T6 Gb or Ex d IIB T6 Gb  
II 2D Ex tb IIIC T80°C Db IP68  
I M2 Ex d I Mb



Marking according to IECEx:  
Explosion protection (gas):  
Explosion protection (dust):  
Explosion protection (mining):

IECEx-TUR-14.0026X  
Ex d IIC T6 Gb  
Ex tb IIIC T80°C Db IP68  
Ex d I Mb



Marking according to EAC-Ex:  
Explosion protection (gas):  
Explosion protection (dust):  
Explosion protection (mining):

No. TC RU C-DE.MIO62.B.01921  
Ex d IIC T6 Gb  
Ex tb IIIC T80°C Db IP68  
PB Ex d I Mb



## Mechanical characteristics

Housing material:  
Protection level:  
Weight:

Stainless Steel 1.4404 (AISI 316L) or optional 1.4401 / 1.4301  
IP 68 (IEC / EN 60529)  
T08-VA2.1.K1.BOR...: 4600 g



## Range of temperature

T08-VA2.1.X.BOR-X-XXX-X-N:  
T08-VA2.1.X.BOR-X-XXX-X-L:  
T08-VA2.1.X.BOR-X-XXX-X-LL:  
T08-VA2.1.X.BOR-X-XXX-X-H:  
T08-VA2.1.X.BOR-X-XXX-X-LH:

0°C to +40°C  
-30°C to +40°C  
-60°C to +40°C  
0°C to +70°C\*1  
-30°C to +70°C\*1



## Electrical characteristics

Power supply:

Power over Ethernet IEEE 802.3af/802.3at  
Class 2, Max. 6.0 W

## Connection cable

Outside diameter:  
Twisted pair structure (data):

8.9 ± 0.3 mm  
4 x 2 x AWG23/1 CAT.6a



## Lens

Type:

Vari focal, P-Iris 3-10.5 mm  
F1.4 with built-in IR-cut filter and motorized focus/zoom  
Horizontal angle of view:  
95° - 34° @ 16/9  
Minimum illumination:  
Color: 0.4 lux, F1.4, B/W: 0.08 lux, F1.4

Horizontal angle of view:  
Minimum illumination:



## Camera

Image sensor:  
Shutter time:  
Video compression:  
Resolutions:  
Frame rate H.264 / Motion JPEG:  
Pan/Tilt/Zoom:  
Video streaming:

Progressive scan RGB CMOS 1/2.9"  
Power line frequency 50 Hz: 1/28000s to 2s, Power line frequency 60 Hz: 1/33500s to 2s  
H.264 (MPEG-4 Part 10/AVC), Motion JPEG  
1920 x 1080 (approx. 2 Megapixel) to 160 x 90  
Rated frequency 50 Hz: 25 fps, Rated frequency 60 Hz: 30 fps  
Digital PTZ, Remote Focus, Remote Zoom  
Multiple, individually configurable streams in H.264 and Motion JPEG  
Controllable frame rate and bandwidth VBR/CBR H.264

Image settings:

Compression, Color, Brightness, Sharpness, Contrast, Whitebalance, Backlight Compensation, Mirroring of Images, Rotation – including Corridor Format, Text and Image Overlay, Privacy Mask, Rotation: 0°, 90°, 180°, 270°, Wide Dynamic Range - Dynamic Contrast, Exposure Control, Exposure Zones, Fine Tuning of Behavior at low Light  
SD/SDHC memory card slot, supporting memory card up 64GB (card not included)  
Support for recording to network share (network-attached storage or file server)

Edge storage:



## Network

Security:  
Supported protocols:

Password protection, IP address filtering, HTTPS\* encryption, digest authentication, user access log  
IPv4/v6, HTTP, HTTPS\*, QoS Layer 3 DiffServ, FTP, SMTP, Bonjour, UPnP, SNMPv1/v2c, v3(MIB-II), DNS, DynDNS, NTP, RTSP, RTP, TCP, UDP, IGMP, RTCP, ICMP, DHCP, ARP, SOCKS  
Open API for software integration, including supporting the ONVIF S specification available at [www.onvif.org](http://www.onvif.org), as well as VAPIX® from Axis Communications, specifications available at [www.axis.com](http://www.axis.com)

Application Programming Interface:

Video motion detection, active tampering alarm

Intelligent video:

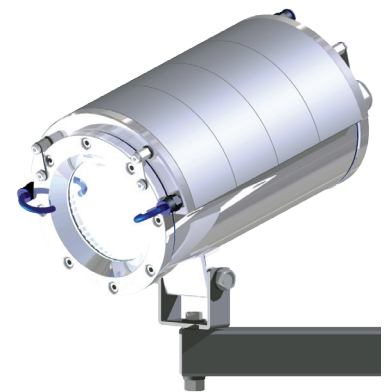
Intelligent video

Alarm triggers:

File upload via FTP, HTTP and email notification via email, HTTP and TCP, video recording to edge storage

Alarm events:

\* 1: These models require the SAMCON cool.Jacket. The temperature class must be reduced to T5.  
The cooling water according to the requirements must be available or be produced.



© SAMCON cool.Jacket @ ExCam IPM114x