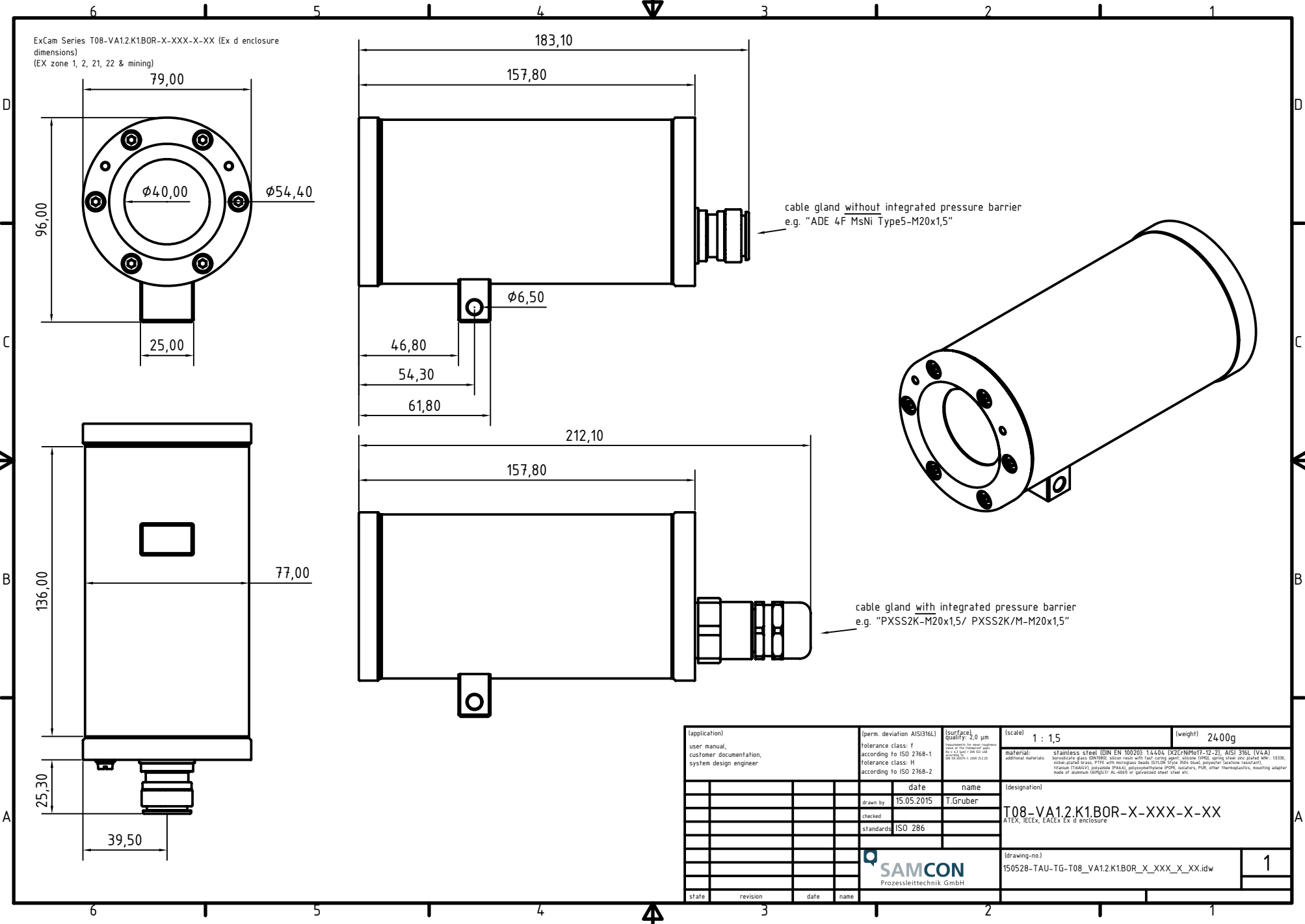


ExCam Series T08-VA12.K1.B0R-X-XXX-X-XX (Ex d enclosure dimensions)
(EX zone 1, 2, 21, 22 & mining)



(application) user manual, customer documentation, system design engineer	(perm. deviation AISI316L) tolerance class: f according to ISO 2768-1 tolerance class: H according to ISO 2768-2	(surface) QUALIFY: 2.0 µm <small>requirements for surface quality: see also ISO 2768-1 and ISO 2768-2</small>	(scale) 1 : 1,5	(weight) 2400g
	date 15.05.2015	name T.Gruber	(designation) T08-VA12.K1.B0R-X-XXX-X-XX ATEX, IECEx, EACEx Ex d enclosure	
	checked	standards ISO 286	(drawing-no) 150528-TAU-TG-T08_VA12.K1.B0R_X_XXX_X_XX.idw	
	state		1	

cable gland with integrated pressure barrier
e.g. "PXSS2K-M20x1,5/ PXSS2K/M-M20x1,5"

cable gland without integrated pressure barrier
e.g. "ADE 4F MsNi Type5-M20x1,5"

