



SAMCON
Prozessleittechnik GmbH

Assembly Instruction

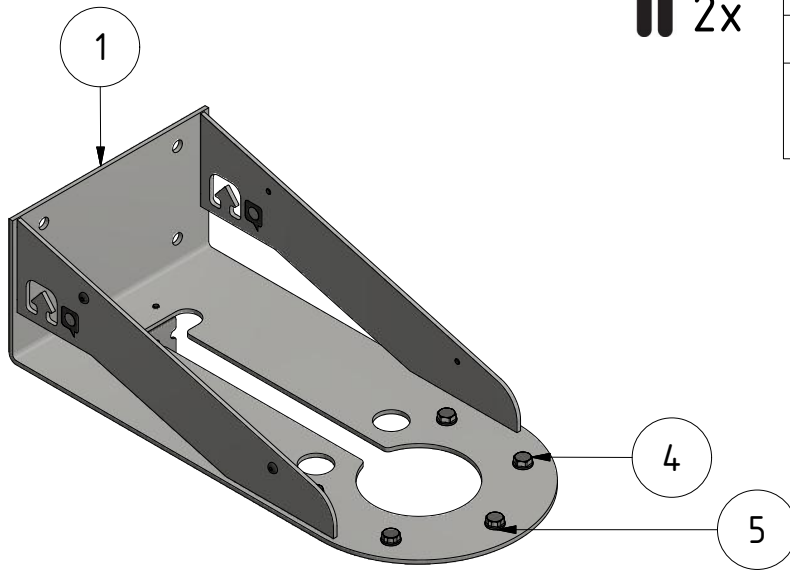
product: WMB TNXCD
author: S. Weber
date: June 19, 2018
doc ID: 180619-PZUMA-SW-WMB TNXCD_assembly
instruction_rev.01.idw



INTRO

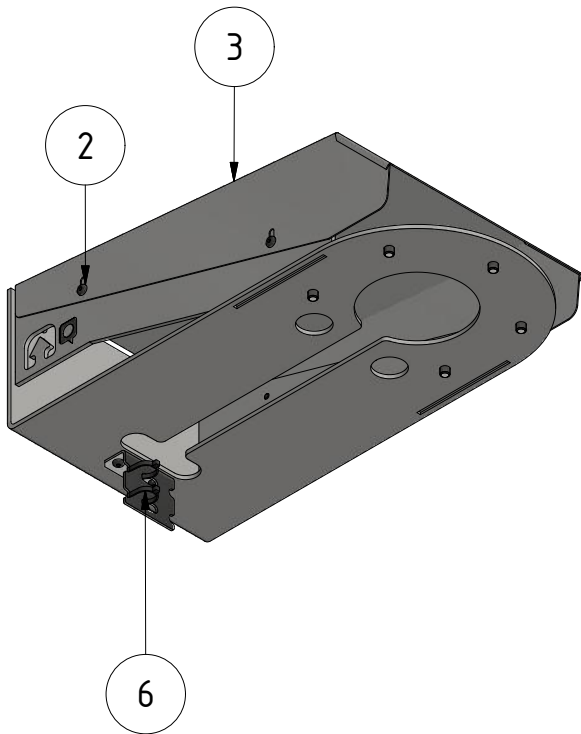


| What you need: | |
|---------------------------|------------------|
| Wrench | 19mm |
| Wrench | 17mm |
| Allen wrench | 3mm |
| Torque, Allen - wrench | 17 - 19mm 3mm |



ATTENTION:

Please be careful when working at heights !

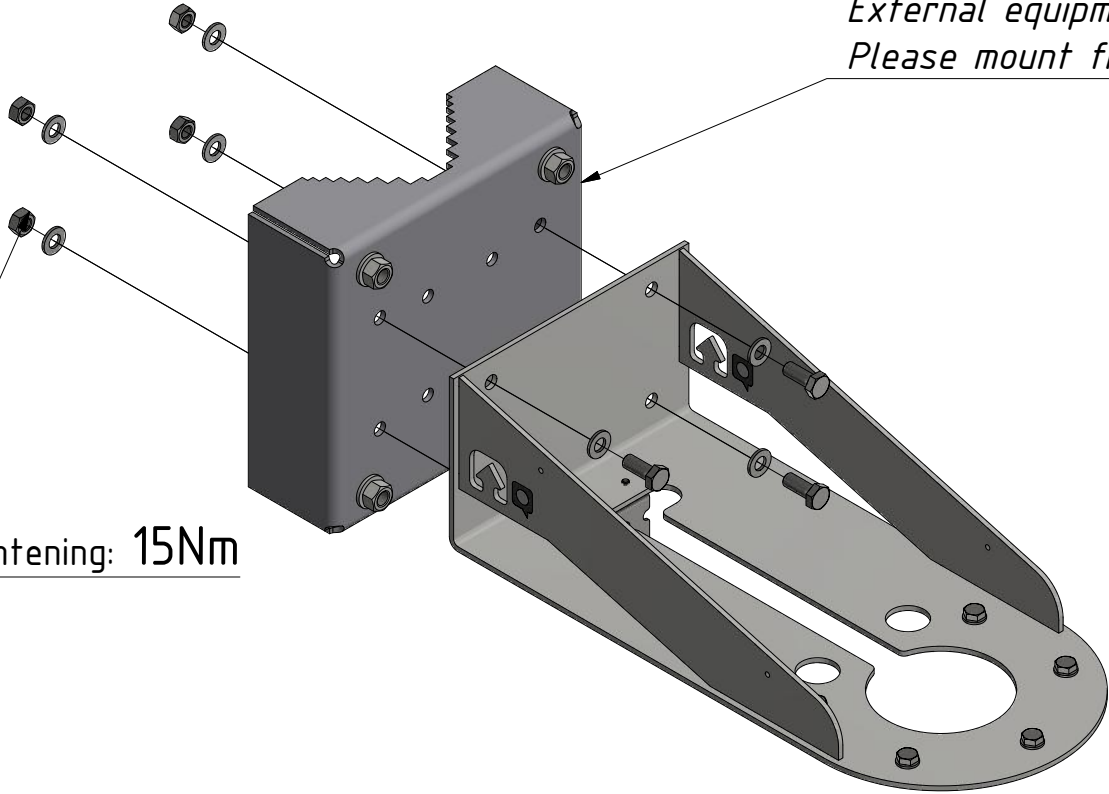


| Table of content | | | |
|------------------|------|-----------------------------------|-----------------|
| obj. | qty. | part | material |
| 1 | 1 | WMB EXCAM XPT | stainless steel |
| 2 | 4 | Threaded bolt ISO 7380-1 - M5 x 8 | stainless steel |
| 3 | 1 | WPR WMB EXCAM XPT | stainless steel |
| 4 | 5 | Threaded bolt DIN 933 - M8 x 12 | stainless steel |
| 5 | 5 | Washer DIN 125 - A 8,4 | stainless steel |
| 6 | 2 | cable tie | poly |

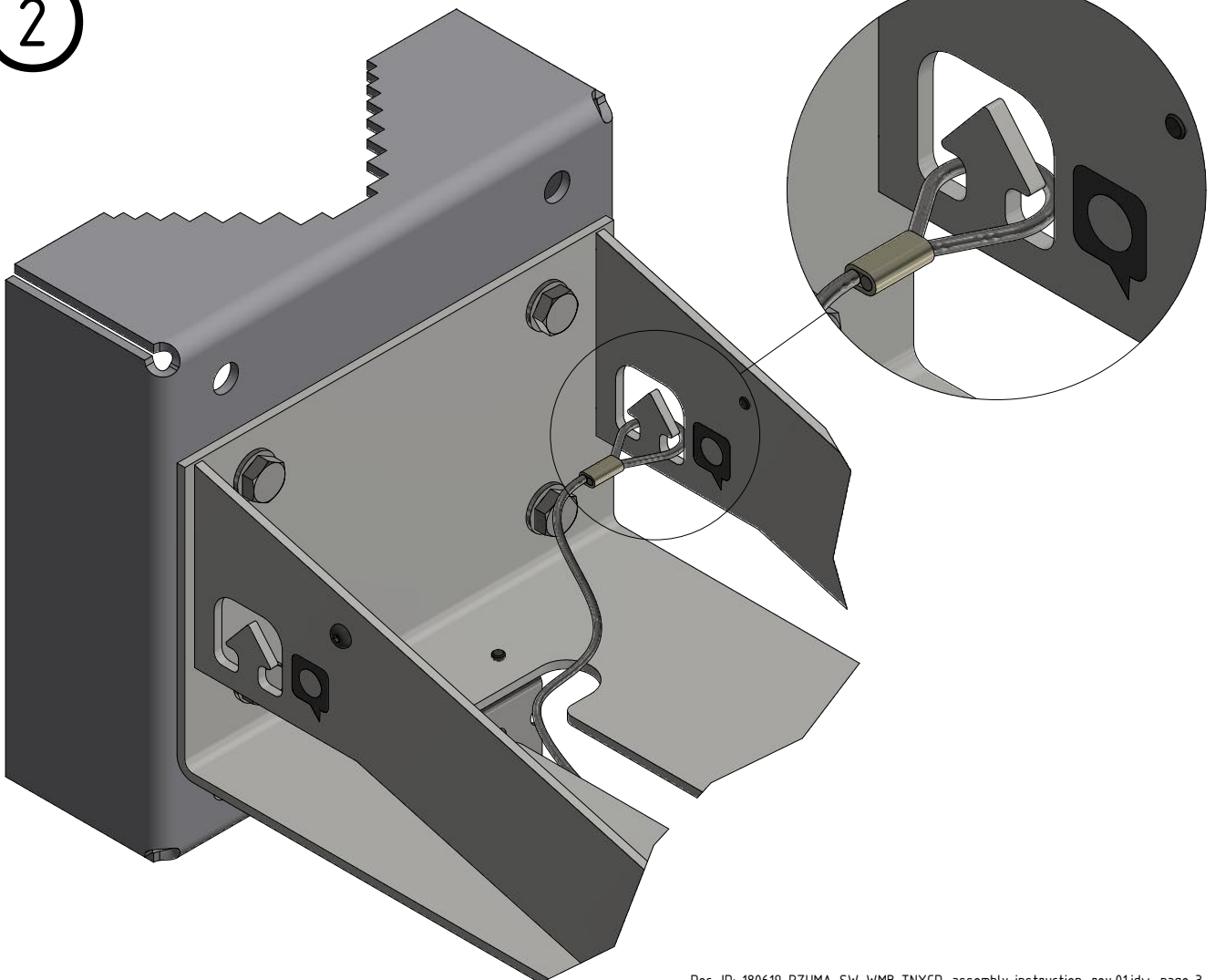
1

*External equipment
Please mount first!*

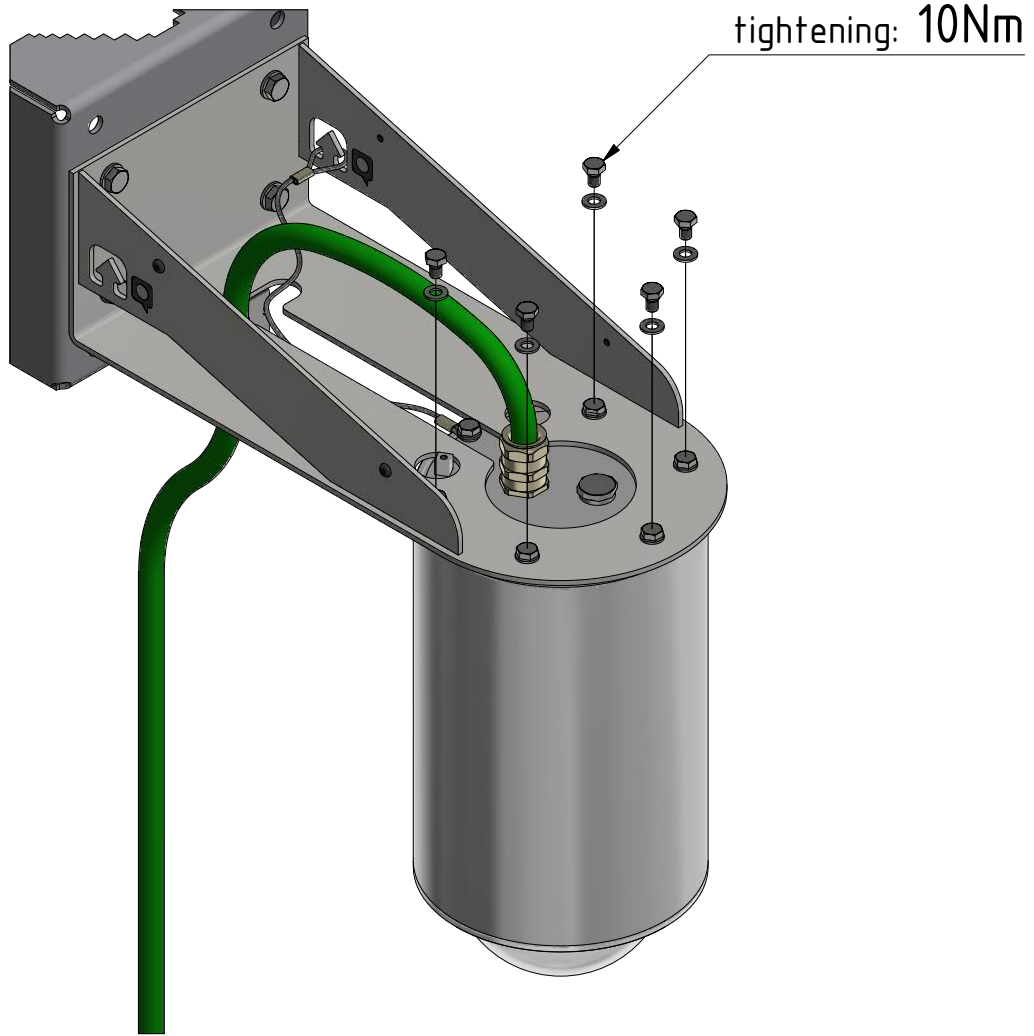
tightening: 15Nm



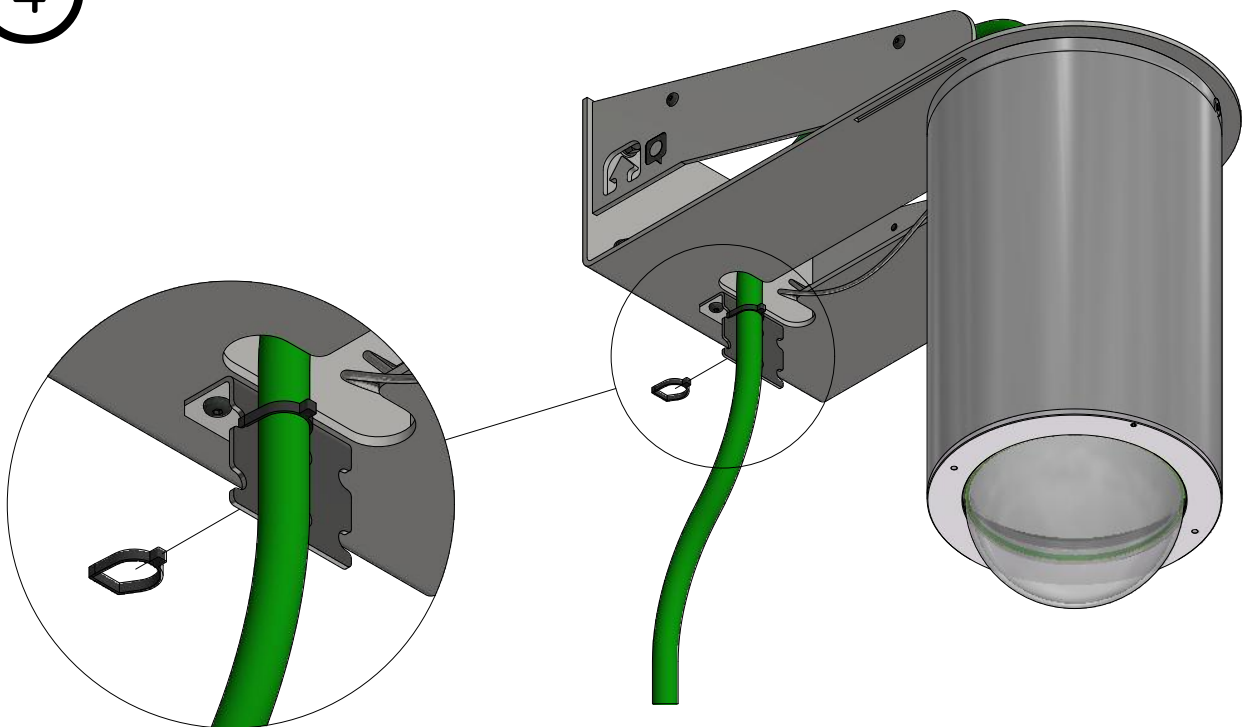
2



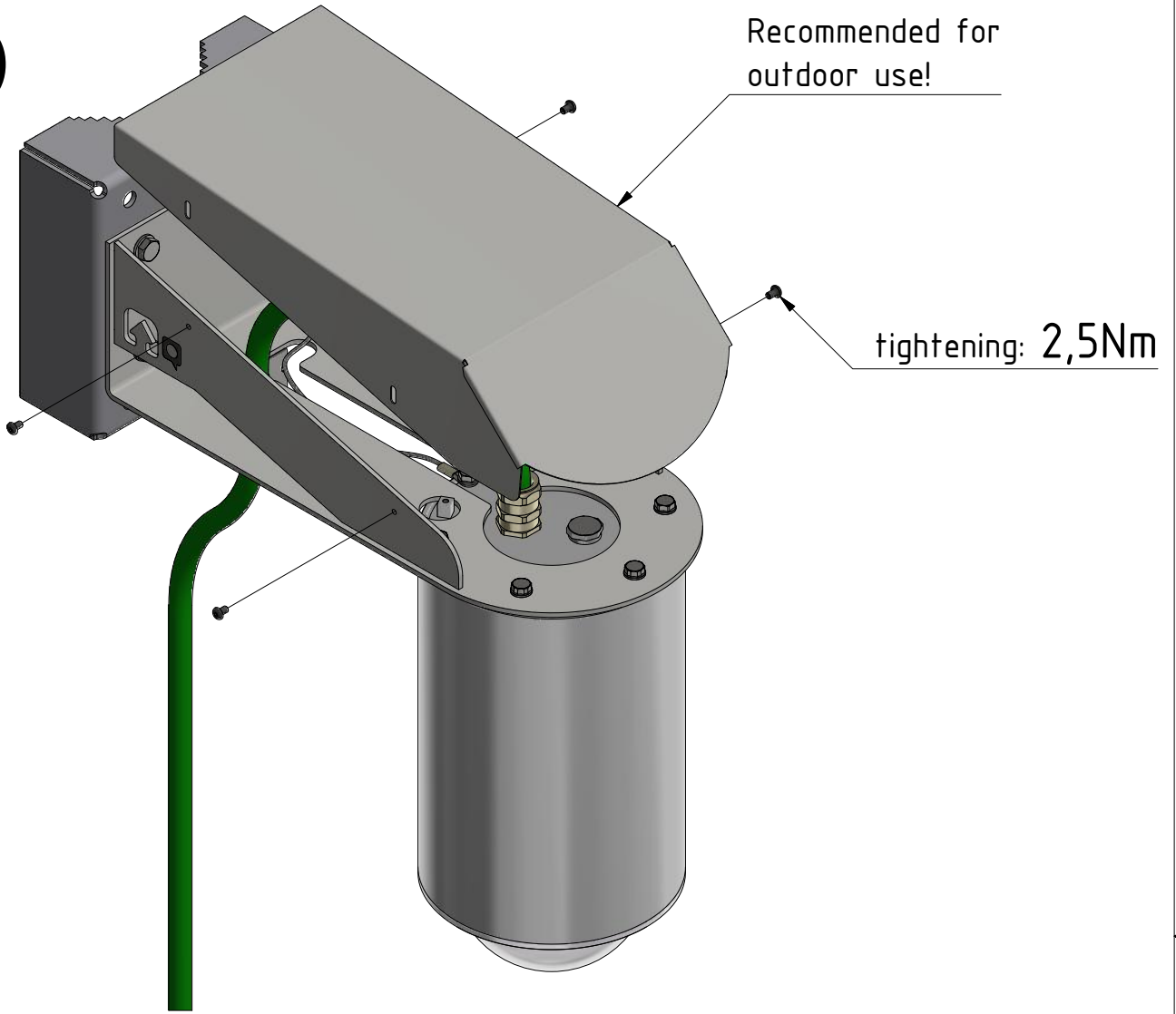
3



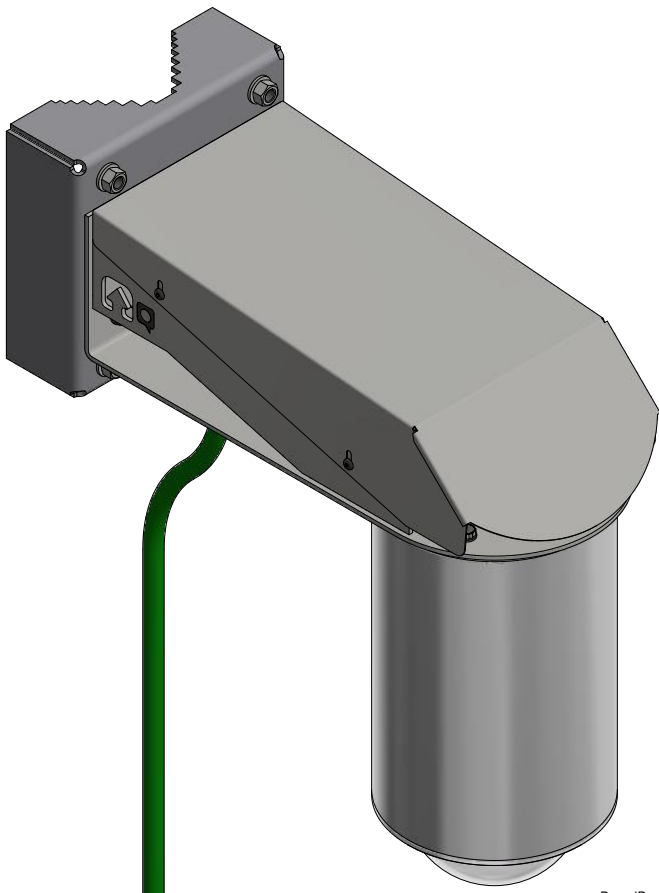
4

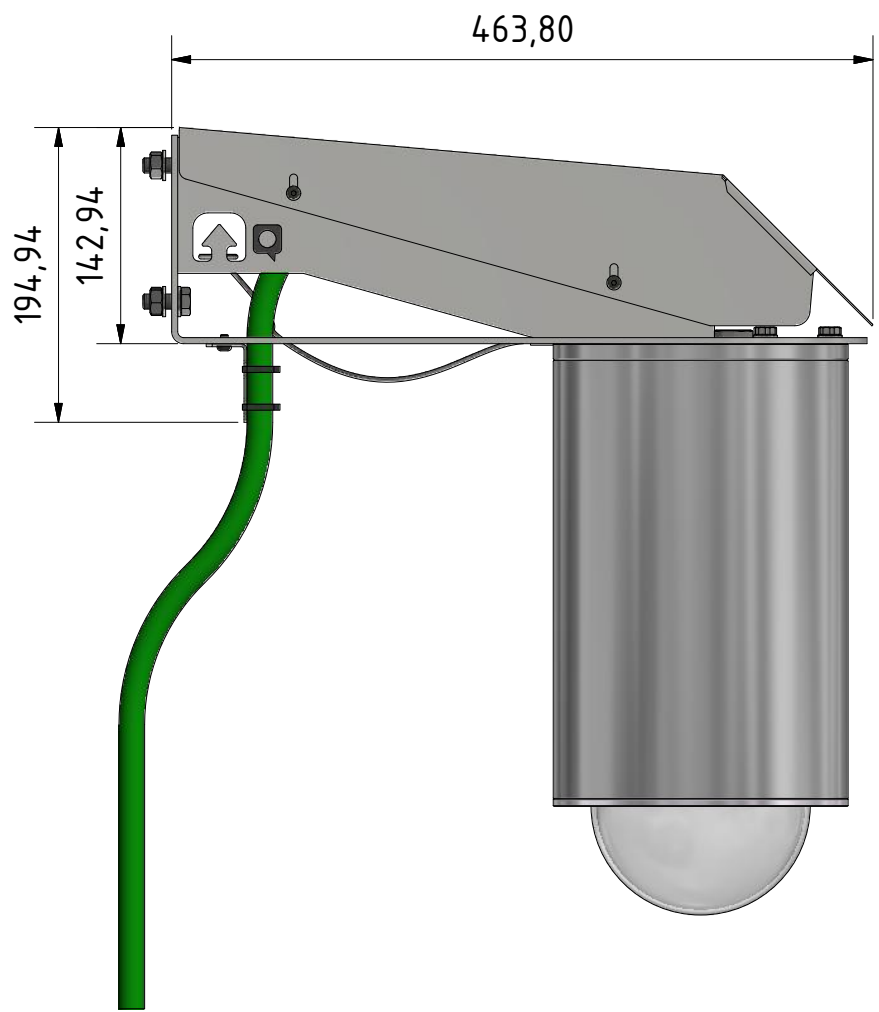
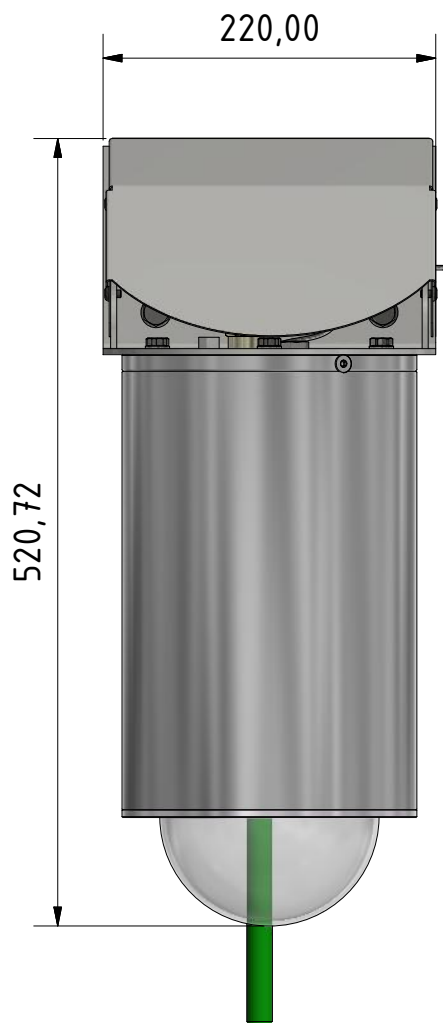


5

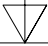


6







Wiring in accordance to
DIN EN 60079-14:2014 (IEC 60079-14:2013) !



Note:
For more information see
other assembly instructions!





SAMCON

Prozessleittechnik GmbH

