

ExCam® IPM1145-L



Compact ATEX, IECEx & EAC-Ex Certified HDTV Day & Night Varifocal Lens Camera with RemoteZoom, RemoteFocus Infra Red Cut Filter and Infra Red LED

Features.

- ✓ ATEX, IECEx & EAC-Ex certification
- ✓ 1920x1080 (HDTV 1080p)
- ✓ Day & Night functionality
- ✓ Dynamic and modular PTC heating concept for arctic temperatures (-60°C)
- ✓ One-cable-wiring (PoE+) IEEE 802.3af/at
- ✓ Built-in IR LEDs and OptimizedIR
- ✓ P-Iris control
- ✓ Remote Focus and Remote Zoom
- ✓ Internal SD-card storage
- ✓ The optional hydraulic enclosure cooling system „cool.Jacket“ allows the use at high temperatures: „High Definition meets High Temperatures“



Zones.

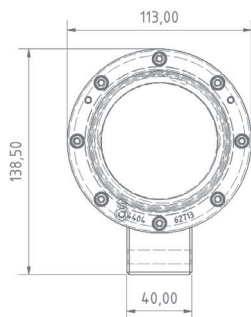
Group I (Mining)	ATEX / IECEx / EAC-Ex	
Category	Ma	Mb
For use in	✗	✓

Group II (Gas & Dust)	ATEX / IECEx / EAC-Ex				
Zone	0	1	2	21	22
For use in	✗	✓	✓	✓	✓

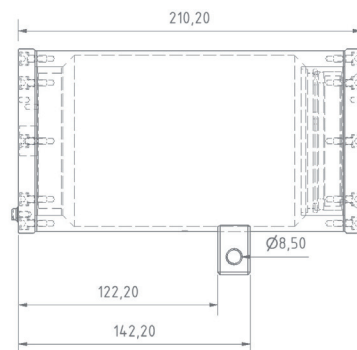
Further certifications upon request.

Dimensions.

T08-VA2.1 .X.X Front view

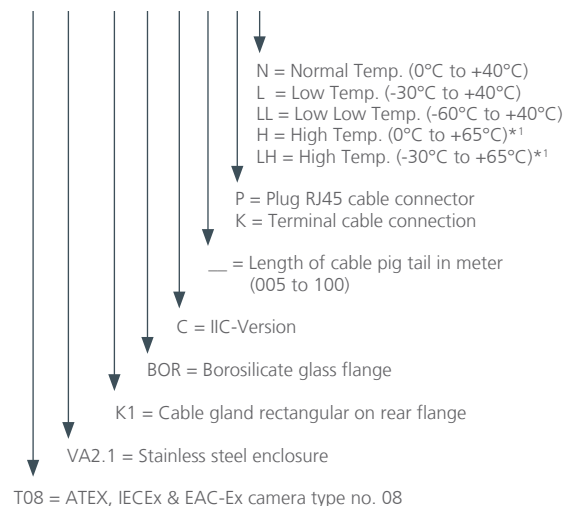


Left side view



Models.

T08-VA2.1.K1.BOR-C-XXX-X-X



Datasheet.

ExCam® IPM1145-L



Explosion protection

Declaration of conformity:

DIN EN 60079-0:2012, DIN EN 60079-1:2007
DIN EN 60079-31:2009
TR CU 012/2011, GOST R IEC 60079-0-2011,
GOST IEC 60079-1-2011, GOST R IEC 60079-31-2010



Marking acc. to ATEX directive 2014/34/EU:
Explosion protection (gas):
Explosion protection (dust):
Explosion protection (mining):

TUEV-14-ATEX-7539X
II 2G Ex d IIC T6 Gb or Ex d IIB T6 Gb
II 2D Ex tb IIIC T80°C Db IP68
I M2 Ex d I Mb



Marking according to IECEx:
Explosion protection (gas):
Explosion protection (dust):
Explosion protection (mining):

IECEx-TUR-14.0026X
Ex d IIC T6 Gb
Ex tb IIIC T80°C Db IP68
Ex d I Mb



Marking according to EAC-Ex:
Explosion protection (gas):
Explosion protection (dust):
Explosion protection (mining):

No. TC RU C-DE.MIO62.B.01921
Ex d IIC T6 Gb
Ex tb IIIC T80°C Db IP68
PB Ex d I Mb



Mechanical characteristics

Housing material:
Protection level:
Weight:

Stainless Steel 1.4404 (AISI 316L) or optional 1.4401 / 1.4301
IP 68 (IEC / EN 60529)
T08-VA2.1.K1.BOR...: 4600 g



Range of temperature

T08-VA2.1.X.BOR-X-XXX-X-N:
T08-VA2.1.X.BOR-X-XXX-X-L:
T08-VA2.1.X.BOR-X-XXX-X-LL:
T08-VA2.1.X.BOR-X-XXX-X-H:
T08-VA2.1.X.BOR-X-XXX-X-LH:

0°C to +40°C
-30°C to +40°C
-60°C to +40°C
0°C to +65°C*1
-30°C to +65°C*1



Electrical characteristics

Power supply:

Power over Ethernet IEEE 802.3af/802.3at
Class 3, max. 10.5 W

Connection cable

Outside diameter:
Twisted pair structure (data):

8.9 ± 0.3 mm
4 x 2 x AWG23/1 CAT.6a



Lens

Type:

Varifocal, P-Iris 3-10.5 mm
F1.4 with built-in IR-cut filter and motorized focus/zoom
Ca. 75° - 34° @ 16/9
0 lux with activated IR illumination (ca. 8 m)
Color: 0.4 lux, F1.4, B/W: 0.08 lux, F1.4

Horizontal angle of view:
Minimum illumination:



Camera

Image sensor:
Shutter time:
Video compression:
Resolutions:
Frame rate H.264 / Motion JPEG:
Pan/Tilt/Zoom:
Video streaming:

Progressive scan RGB CMOS 1/2.9"
Power line frequency 50 Hz: 1/28000s to 2s, Power line frequency 60 Hz: 1/33500s to 2s
H.264 (MPEG-4 Part 10/AVC), Motion JPEG
1920 x 1080 (approx. 2 Megapixel) to 160 x 90
Rated frequency 50 Hz: 25 fps, Rated frequency 60 Hz: 30 fps
Digital PTZ, Remote Focus, Remote Zoom
Multiple, individually configurable streams in H.264 and Motion JPEG
Controllable frame rate and bandwidth VBR/CBR H.264
Compression, Color, Brightness, Sharpness, Contrast,
Whitebalance, Backlightcompensation, Mirroring of images,
Rotation – including Corridor Format, Text and imageoverlay,
Privacy mask, Rotation: 0°, 90°, 180°, 270°
Wide Dynamic Range - Dynamic Contrast, Exposure control,
Exposure zones, Fine tuning of behavior at low light
SD/SDHC memory card slot, supporting memory card up 64GB (card not included)
Support for recording to network share (network-attached storage or file server)

Image settings:

Edge storage:



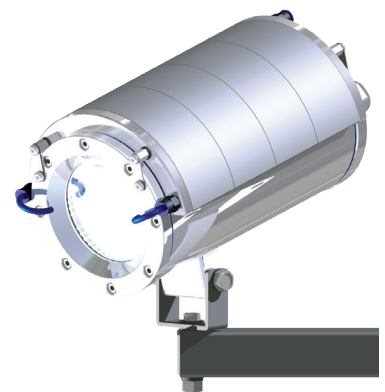
Network

Security:
Supported protocols:

Password protection, IP address filtering, HTTPS* encryption, digest authentication, user access log
IPv4/v6, HTTP, HTTPS*, QoS Layer 3 DiffServ, FTP, SMTP, Bonjour, UPnP, SNMPv1/v2c, v3(MIB-II), DNS,
DynDNS, NTP, RTSP, RTP, TCP, UDP, IGMP, RTCP, ICMP, DHCP, ARP, SOCKS
Open API for software integration, including supporting the ONVIF S specification available at
www.onvif.org, as well as VAPIX® from Axis Communications, specifications available at www.axis.com
Video motion detection, active tampering alarm
Intelligent video
File upload via FTP, HTTP and email notification via email, HTTP and TCP
Video recording to edge storage

Application Programming Interface:

Intelligent video:
Alarm triggers:
Alarm events:



© SAMCON cool.Jacket @ ExCam IPM114x

* 1: These models require the SAMCON cool.Jacket. The temperature class must be reduced to T5.
The cooling water according to the requirements must be available or be produced.