



SAMCON

Prozessleittechnik GmbH

Assembly Instruction

product: WMB-VA1.x (M8)
author: S. Weber
date: Oct. 22, 2019
doc ID: 191022-PZUMA-SW-WMB-VA1.x_assembly instruction_rev.01
(M8).idw
passing:



INTRO



What you need:	
Wrench	13mm
Torque -wrench	13mm

ATTENTION:
Please be careful when
working at heights !

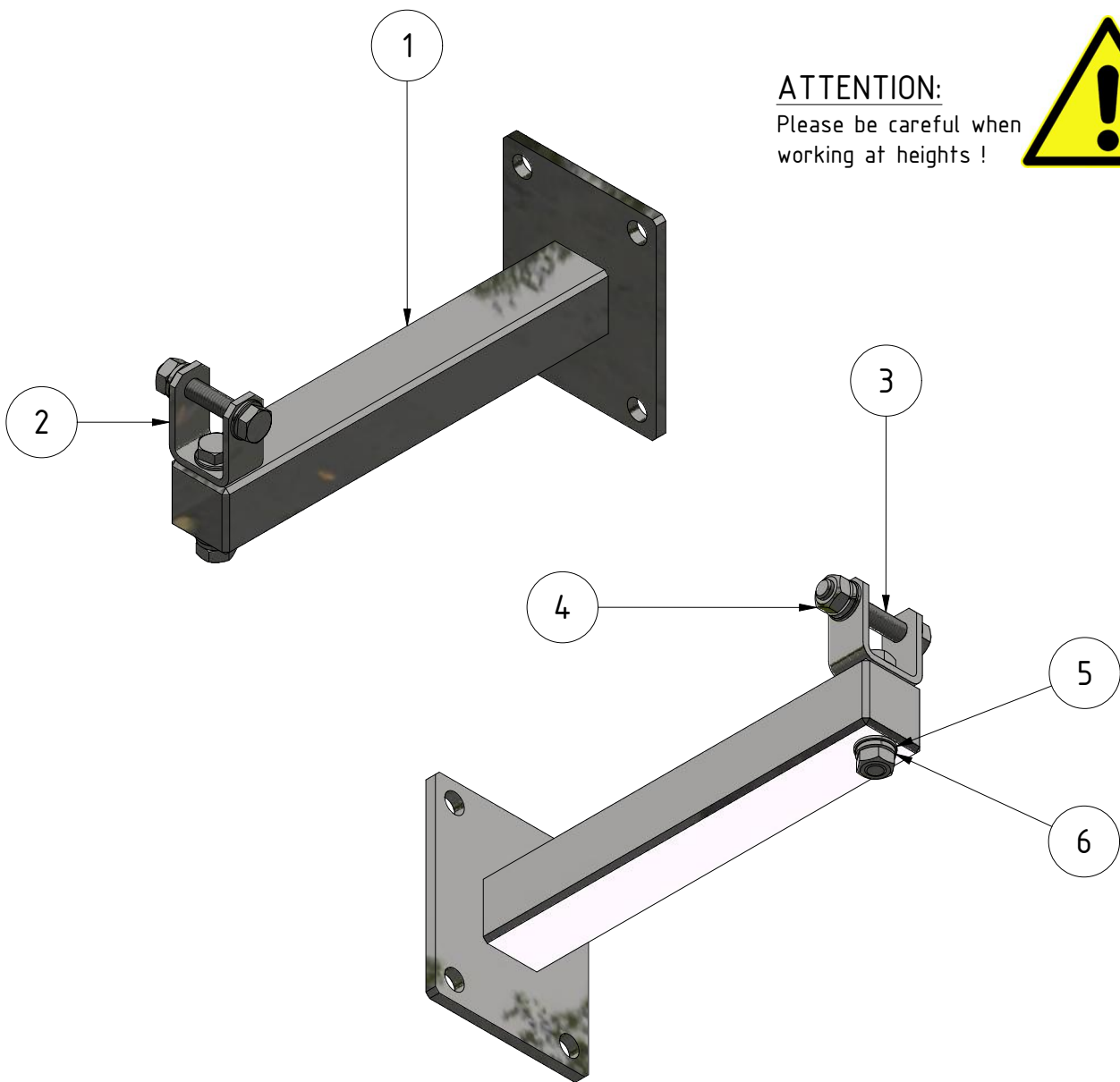
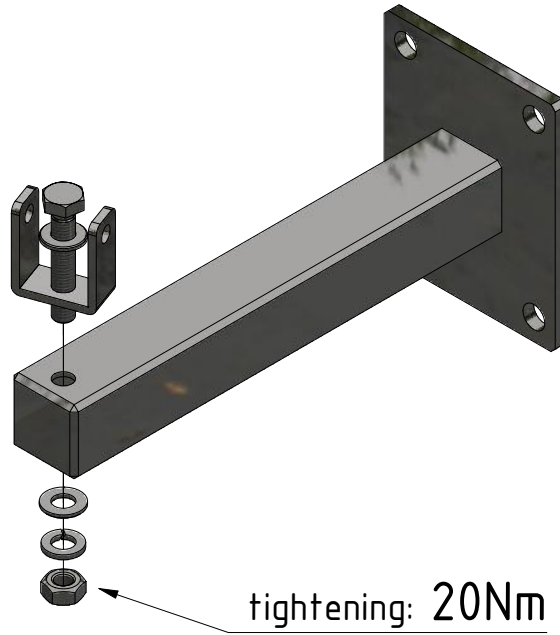
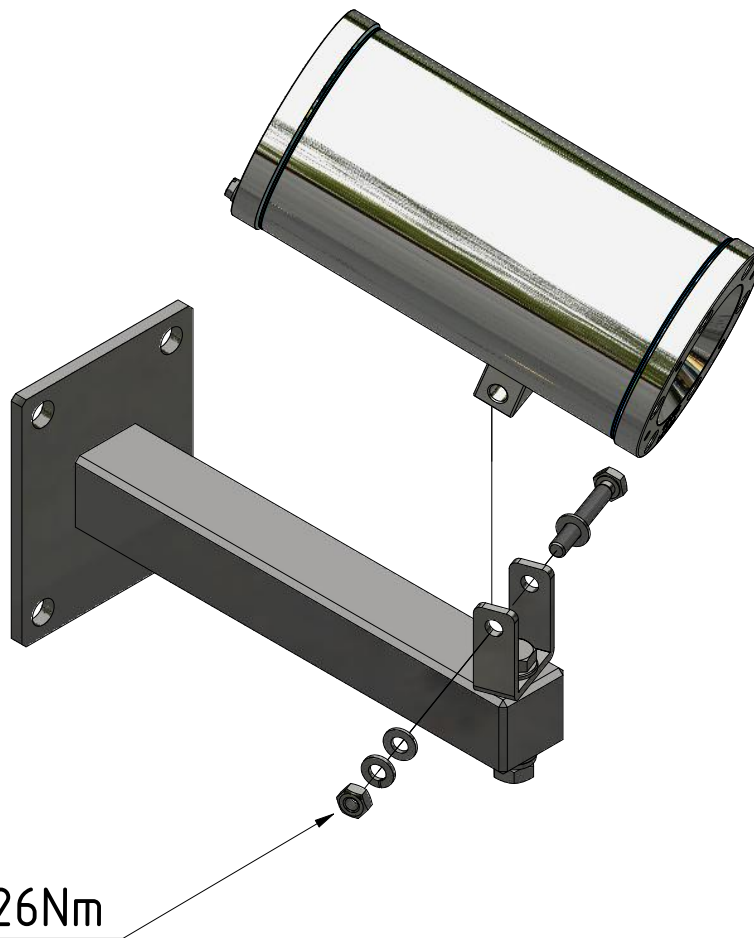


Table of content			
obj.	qty.	part	material
1	1	WMB-VA1.x	stainless steel
2	1	WMB-VA1.x fastening sheet	stainless steel
3	2	Threaded bolt DIN 933 - M8 x 45	stainless steel
4	2	Nnut ISO 4032 - M8	stainless steel
5	4	Washer DIN 433 - 8,4	stainless steel
6	2	Washer DIN 7980 - A8	stainless steel

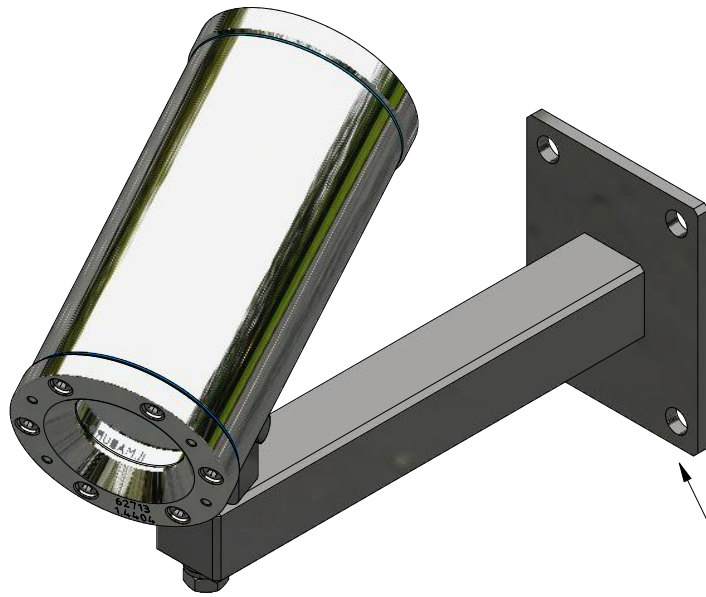
1



2

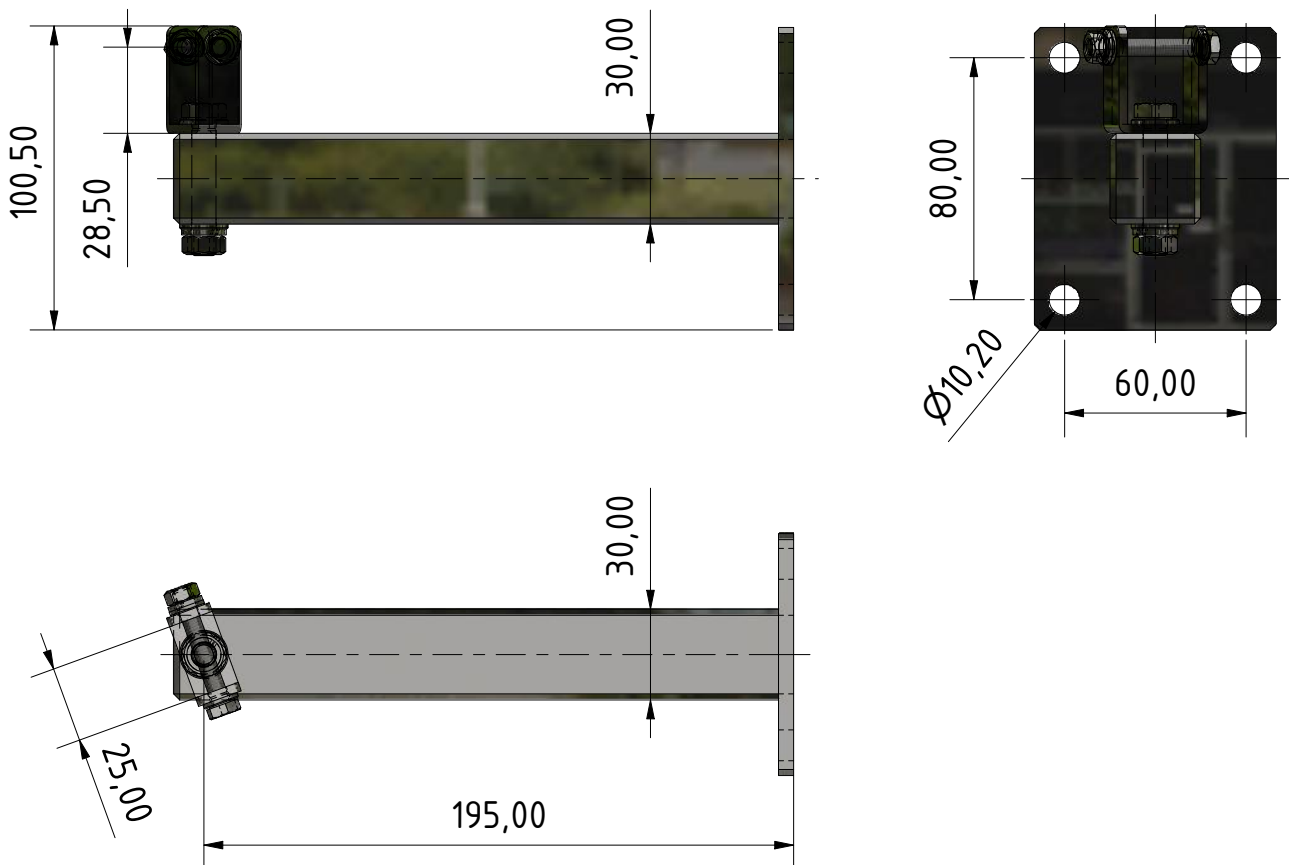


3



*Fasten to wall or to
PMB (pole mount bracket) !*

4



Note:
For more information see
other assembly instructions!







SAMCON

Prozessleittechnik GmbH

