

# cool.Jacket 2.0

Active housing cooling: High Definition meets High Temperatures

## Datasheet.

### Features.

**Compatible with**  
All ExCam of the VA2.X series

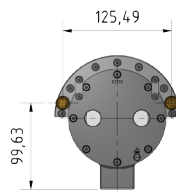
#### Concept

Intercooler-System for process water: The cooling element is flooded with cooling water. So the inside temperature is kept below the maximum permitted value of the camera module by the principle of heat exchange. So the functional ambient temperature range could be extended. The water flow could be controlled automatically or, if needed, manually.

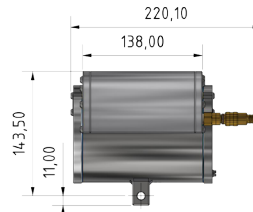
### Dimensions.

cool.Jacket-VA2.X

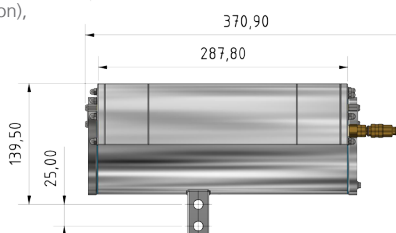
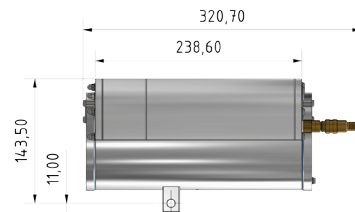
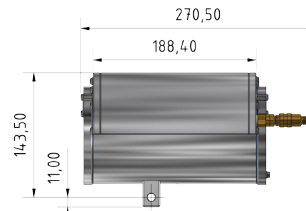
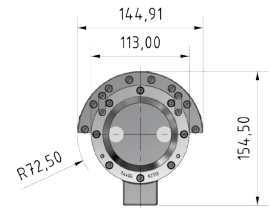
Rear view



Side view right



Front view



### Data.

Downgrade of the temperature class (of the camera)  
due to the increased ambient temperature

#### Mechanical Characteristics

**Material:** Aluminum EN AW 7075, PTFE (Teflon), brass, stainless steel

**Weight (cool.Jacket):** 1.5 / 1.7 / 2.05 / 2.5 kg

**Range of Temperature**  
with antifreeze, ethanol-based

#### Water Supply

**Type of regulation:** Unregulated (constant waterflow), regulated or controlled  
**Optional:** Cooling appliance (not in the scope of delivery)  
**Input:** NW5 for 9 mm tube  
**Output:** NW5 for 9 mm tube  
**Medium:** neutral water @ 20°C < 1bar  
**Volumetric flow rate:**  $Q_{min} = 10 \text{ l/min}$



#### Physical Characteristics:

**Specific thermal conductivity:**  $\lambda = 130\text{-}160 \text{ W/(m}\cdot\text{K)}$   
**Specific heat capacity:**  $c = 862 \text{ J/(m}\cdot\text{K)}$

#### Optional accessories:

Tubes, Insulation (Armaflex), Water cooling unit

## Concept.

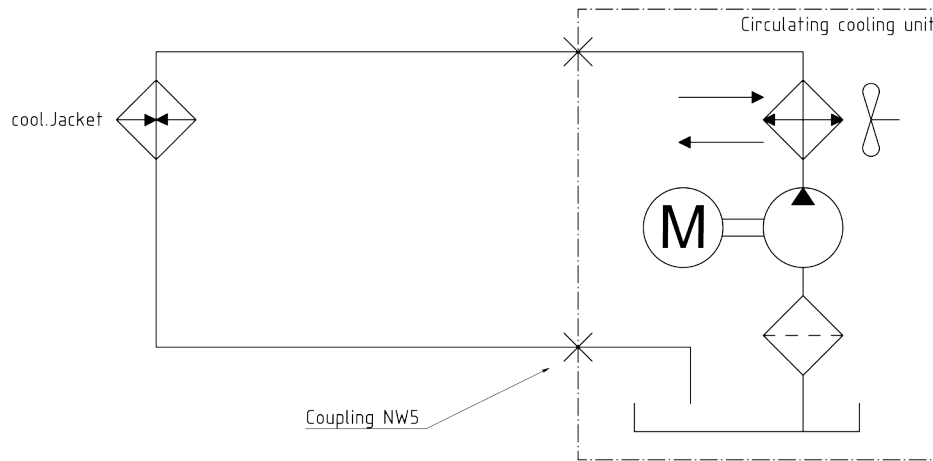
### Hydraulic plan.

cool.Jacket-VA2.X



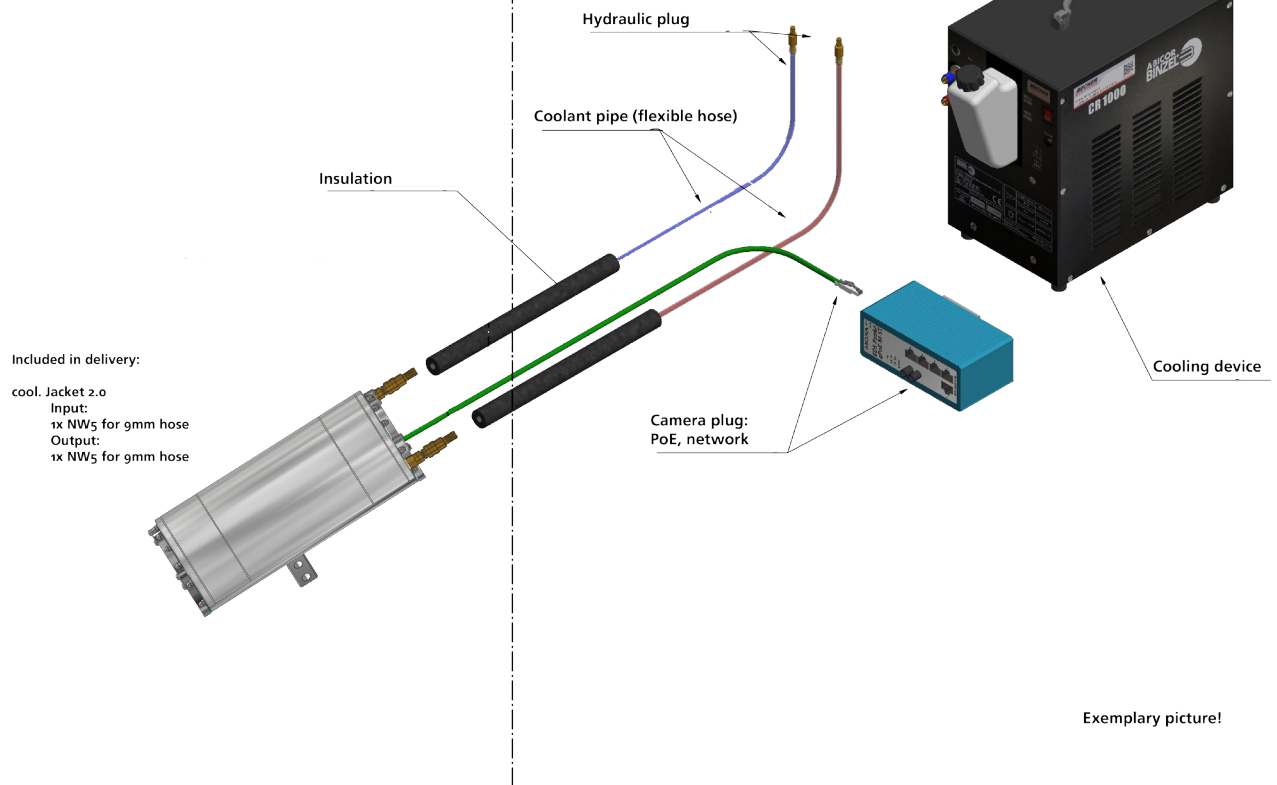
Schillerstrasse 17  
D-35102 Lohra-Altenvers

info@samcon.eu  
T: +49 6426 9231-0  
F: +49 6426 9231-31



Hazardous area IIC T4  
(T<sub>amb</sub> = max. 120°C)

Safe area  
-cooling device  
-PoE Network



Exemplary picture!